



Walton

ITINERARY



09:30

Breakfast & Seafront Stroll

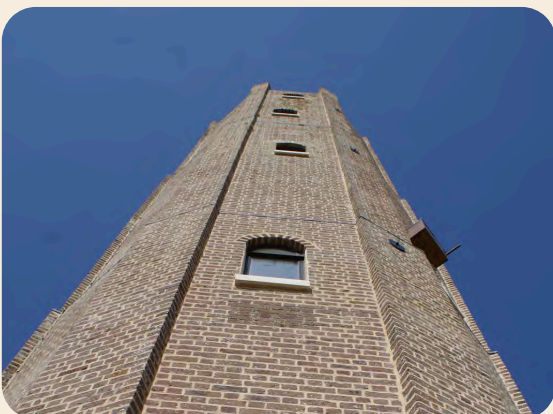
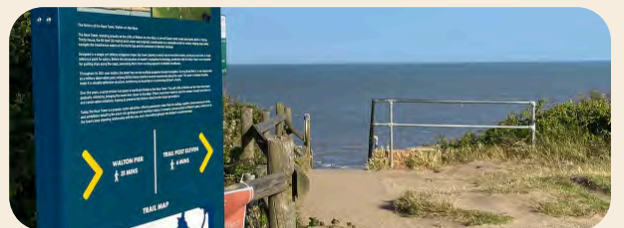
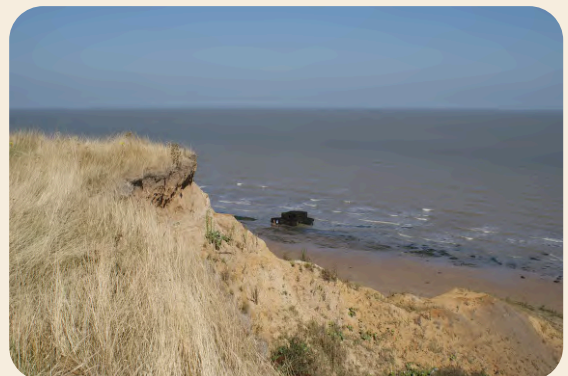
Start your day with breakfast at a local café near the High Street or seafront. Then take a gentle walk along the promenade, enjoying views of the beach and the historic Walton Pier, one of the longest in the UK.

Fossil Hunting

10:30

at The Naze

Head north to The Naze, a stunning stretch of coastline known for its geological significance. Explore the beach below the cliffs where you can hunt for fossils, including ancient shark teeth and shells.



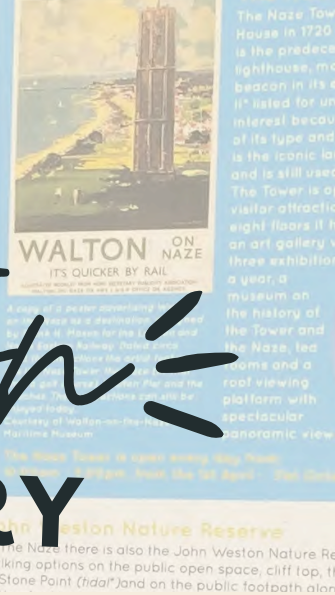
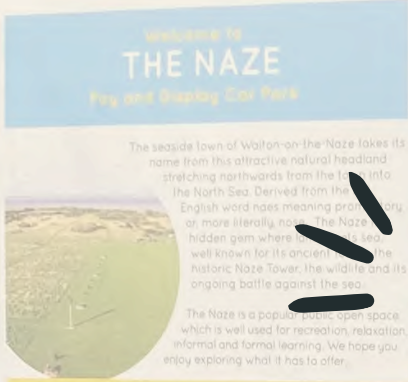
12:00

Visit the Naze Tower

Climb the Naze Tower, an 86-foot Georgian landmark offering panoramic views of the coast and countryside. Inside, you'll find:

- A café.
- A small art gallery.
- Local history exhibits.
- A rooftop viewing platform.

Walton ITINERARY



13:00 Picnic at the Naze or lunch in Town

Enjoy a picnic near the Naze Tower, surrounded by coastal views and open skies, a perfect spot to relax and refuel. Alternatively, head to the nearby Naze Discovery Centre, which offers a café serving light meals, snacks, and drinks with a focus on sustainability and local produce.

15:00 All the fun of the Pier

Spend the afternoon exploring Walton Pier, one of the longest in the country. Enjoy classic amusements, rides, and arcade games, perfect for families, nostalgic visitors, or anyone looking for a bit of seaside fun.



18:30 Dinner & Sunset

Finish your day with dinner at a local restaurant or fish and chip shop, and enjoy the sunset over the sea. A peaceful end to a day of discovery.